



ADAPTAPANEL EDGE PROTECTION



SYD 02 8844 4500
MEL 03 9309 0544
BEN 07 3266 7111
PER 08 9218 9400

www.safesmartaccess.com.au

EDITION 1

AN INTRODUCTION TO ADAPTAPANEL.

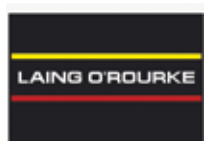
The SafeSmart Access AdaptaPanel is a robust edge protection system, the innovative engineered system offers limitless versatility for a vast range of application settings. Its interchangeable design allows AdaptaPanel to meet the ever-changing nature of both civil and construction projects.

AdaptaPanel is a tried and tested solution in market-leading edge protection systems and has been regarded by engineers as the system of choice for its temporary works capabilities.

- Heavy-duty welded box section steel frame makes it ideal for use as both temporary or semipermanent edge protection.
- Posts bolt to slab edge, and slide-in panels are secured with a fixing bolt.
- Long-lasting and aesthetically pleasing galvanised finish.
- Sliding safety latches retain mesh panels preventing unintentional lift-off.
- Available in multiple post heights: 1.0m, 1.5m, 2.0m, 3.0mH
- The 1.0mH & 2.0mH are ideal for high-rise construction and to assist with PEZ (perimeter exclusion zone)
- Posts can be positioned anywhere along the panel.
- Panels may be stacked in stillages for easy storage and transport
- Designed to meet relevant design and load requirements of AS4994.1:2009 "Temporary edge protection" standard and AS1657:2018.

OUR CLIENTS

We have partnered with the below construction companies for their edge protection needs.



WHY ADAPTAPANEL

The leading Edge Protection System on the Market.



EASY INSTALLATION

SafeSmart's user guide and inspection test reports simplify installation.



SAFETY

Sliding safety latches secure mesh panels and prevent accidental lift-off.



EASE OF TRANSPORT & STORAGE

Special stillages ensure easy storage and secured transport.



COMPLIANCE

Designed and tested to meet AS/NZS 4994.1 and AS 1657 edge protection standards.



RE-USABLE

Heavy duty posts and frame panels can withstand the rigours of construction sites.



DESIGN

10-year design life.



CONFIGURABILITY

Configurable with multiple heights.



MOUNT OPTIONS

Face mount and surface mount options.



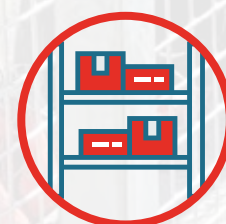
TEMPORARY WORKS ENGINEERING SUPPORT

Site Specific configuration drawings and design certification.



SHALLOW EMBEDMENT POST OPTIONS

A range of designs to minimise minimum anchor embedment.



LARGE STOCKHOLDING

A large amount of inventory is held across four locations in Australia.



ONSITE CONSULTATION

Access to consultants and engineers for site scoping and layout.

ADAPTAPANEL: TOP MOUNT



1mH ADAPTAPANEL

CODE	DESCRIPTION
210842	AdaptaPanel EP Post - 1.0mH



SOLUTIONS:

- Gawk Screens
- Void Edge Protection
- General Edge Protection
- Site Delineation

1.5mH ADAPTAPANEL

CODE	DESCRIPTION
210843	AdaptaPanel EP Post - 1.5mH



SOLUTIONS:

- Capping Beam Edge Protection
- Medium Risk Applications

2mH ADAPTAPANEL

CODE	DESCRIPTION
210875	AdaptaPanel EP Post - 2.0mH



SOLUTIONS:

- Acoustic Fences
- High risk applications
- Deep Shafts
- Crane Pez
- Security Fences
- High Profile Project/ Government Projects

3mH ADAPTAPANEL

CODE	DESCRIPTION
210876	AdaptaPanel EP Post - 3.0mH



SOLUTIONS:

- Stepped Capping Beam
- Used as edge protection screens
- Very high-risk applications near public interface

ADAPTAPANEL: FACE MOUNT



1mH FACE MOUNT

CODE	DESCRIPTION
210870	AdaptaPanel Face Mount Post - 1.0mH



SOLUTIONS:

- Gawk Screens
- Void Edge Protection
- General Edge Protection
- Site Delineation

1.5mH FACE MOUNT

CODE	DESCRIPTION
210871	AdaptaPanel Face Mount Post - 1.5mH



SOLUTIONS:

- Capping Beam Edge Protection
- Medium Risk Applications

2mH FACE MOUNT

CODE	DESCRIPTION
210872	AdaptaPanel Face Mount Post - 2.0mH

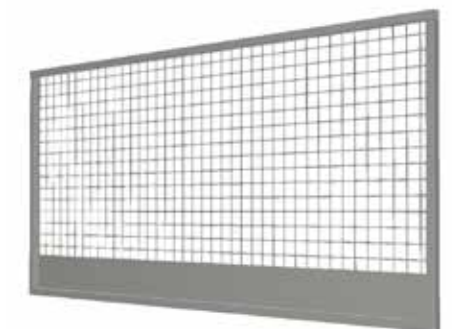


SOLUTIONS:

- Acoustic Fences
- High risk applications
- Deep Shafts
- Crane Pez
- Security Fences
- High Profile Project/ Government Projects

MESH PANEL

CODE	DESCRIPTION
210844	AdaptaPanel Mesh Fence - 0.5mW x 1.0mH
210845	AdaptaPanel Mesh Fence - 0.5mW x 2.0mH
210846	AdaptaPanel Mesh Fence - 1.0mW x 1.0mH
210847	AdaptaPanel Mesh Fence 1.0mW x 2.0mH
210964	AdaptaPanel Mesh Fence Panel w/ Sliding Windows



CRANKED POST

CODE	DESCRIPTION
210965	AdaptaPanel EP Post - 2.0mH with 45° angle Cranked Post
210845	AdaptaPanel Mesh Fence - 0.5mW x 2.0mH
218847	AdaptaPanel Mesh Fence 1.0mW x 2.0mH

SOLUTIONS:

- Rated Edge Protection whilst maintaining maximum visibility down shafts/ excavations
- Ideal for crane operators and dogmen

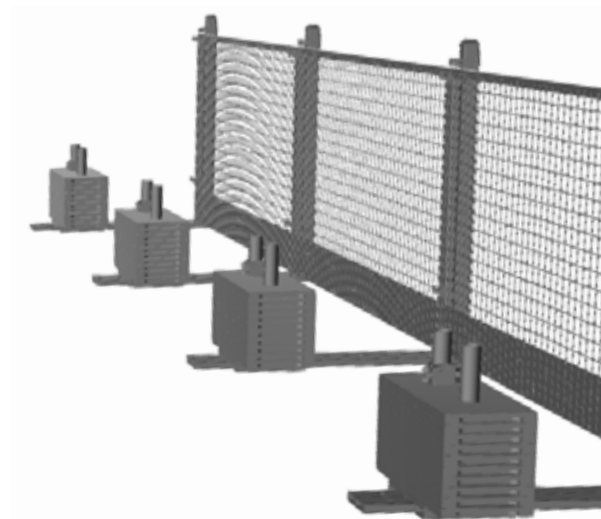


COUNTERWEIGHT

CODE	DESCRIPTION
210842	AdaptaPanel EP Post - 1.0mH
210847	AdaptaPanel Mesh Fence 1.0mW x 2.0mH
CUSTOM	Counterweight Base Foot

SOLUTIONS:

- Ideal for areas where fixings are restricted



Disclaimer:

Counter Weight system must be used in conjunction with applicable temporary works design. For clarification, please consult your SafeSmart Access representative.

SLIDING PANEL

CODE	DESCRIPTION
210964	AdaptaPanel EP Post - 1.0mH x 2.0mL with Sliding Windows
210875	AdaptaPanel EP Post - 2.0mH

SOLUTIONS:

- Access point for surveyors.
- Opening for Temporary Service
- Designated viewing area for Rigger, Dogman or visiting personnel



ADAPTAPANEL GATE

CODE	DESCRIPTION
210146	AdaptaPanel Swing Gate
210847	AdaptaPanel EP Post - 2.0mH (2 required)

SOLUTIONS:

- Designated Access Gate through AdaptaPanel
- Ideal for exclusion zones and temporary fencing



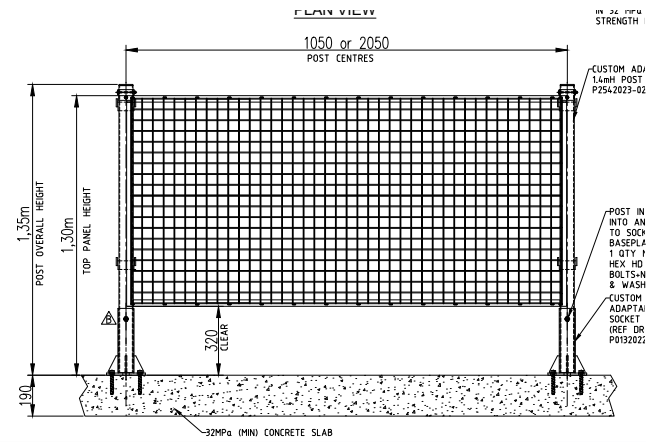
DID YOU KNOW?

SafeSmart Access provides complimentary onsite consultation for any edge protection requirements.

Scan QR code and submit a site visit request today!

SACRIFICIAL BASEPLATES

SafeSmart Access was consulted to provide an edge protection system that is cost-effective and efficient during continuous concrete pours. SafeSmart Access designed and engineered sacrificial baseplates that remained in the concrete during each pour, allowing the client to reuse posts and panels. This was a cost-effective solution minimising waste and ensuring an edge protection system was in place at each stage.



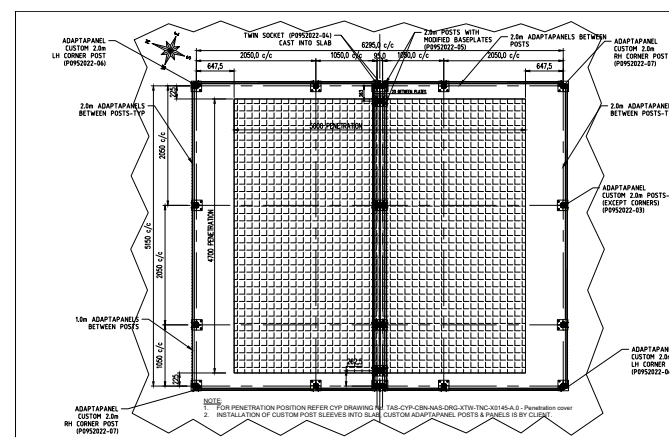
CONCEPT DRAWING



RESULT

ADAPTAPANEL SLEEVE BASEPLATES

The client wanted to implement AdaptaPanel without bolting it down on their site. Following a consultation, we designed and fabricated a steel sleeve to cast into the concrete slab. A welded spigot was added to the bottom of the AdaptaPanel posts, so that the posts can seamlessly slide into the sleeve without the use of any fixings.



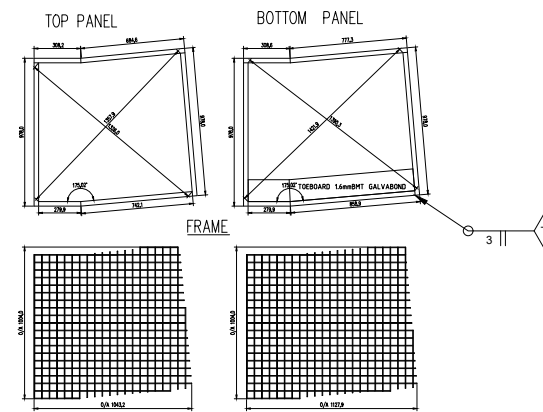
CONCEPT DRAWING



RESULT

CUSTOM IN-FILL PANELS

Custom AdaptaPanel Panels, also known as infill panels, were fabricated for the Sydney Metro Central Tunnelling Project. The Infill panels features angular panel frames that matched the contour and angle changes on the site's capping beam. This ensured an edge protection system was in place despite varying contours of the worksite, with no compromises on safety and durability. As a result, a finished solution could be handed over to a fit-out contractor.



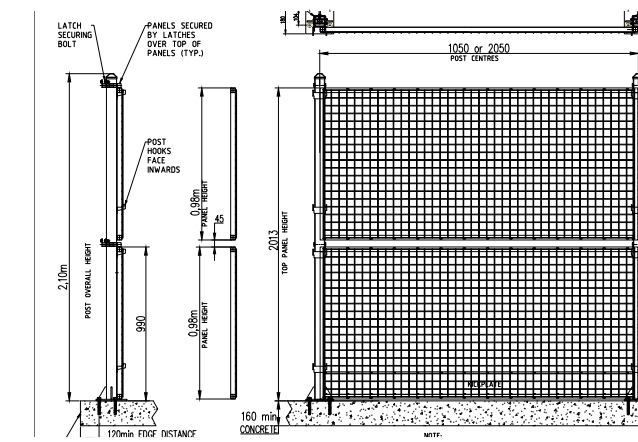
CONCEPT DRAWING



RESULT

ADAPTAPANEL CORNER POSTS

AdaptaPanel 2.0mH Corner Post was utilised to maximise efficiency on site with installation reducing the number of posts required. The reduced number of posts on the site resulted in a record installation time in comparison to previous systems they used.



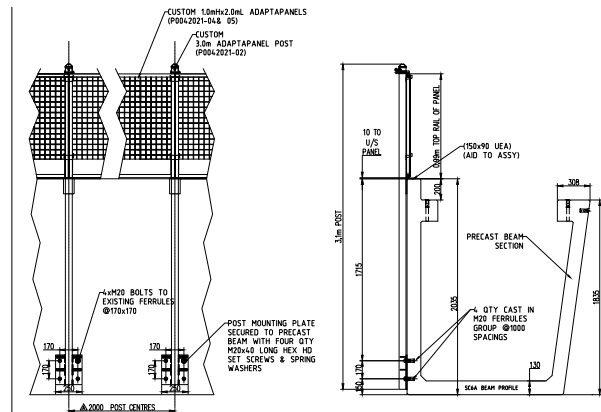
CONCEPT DRAWING



RESULT

CORNER POST IS NOW A STOCKED SOLUTION!

ADAPTAPANEL CUSTOM 3.0mH FACE MOUNT

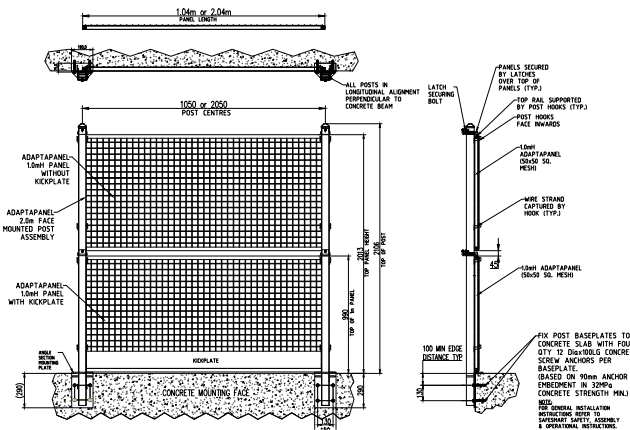


CONCEPT DRAWING



RESULT

ADAPTAPANEL FACE MOUNT 2.0mH WITH SHALLOW EMBEDMENT

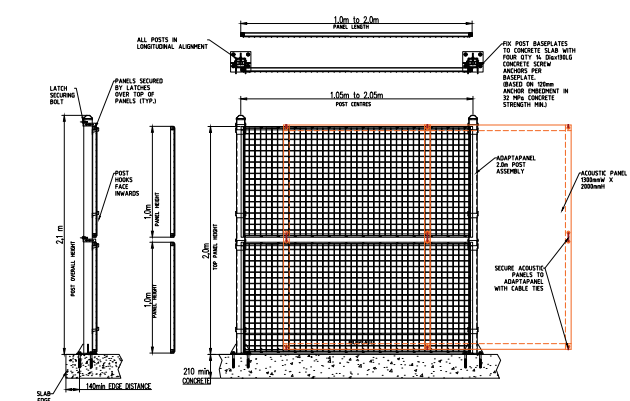


CONCEPT DRAWING



RESULT

ADAPTAPANEL 2.0MH WITH ACOUSTIC CURTAINS



CONCEPT DRAWING



RESULT

5 STEPS TO SUCCESS THE SAFESMART JOURNEY

SCOPING

We thoroughly scope your business, and engage with key stakeholders to understand pain points, and challenges that have led you to seek a solution.



SOLUTION

We form the proposed solution based on the details acquired from the scoping phase. A general consensus is established with technical stakeholders on the functionality, price, and schedule to ensure the solution is suited to these requirements.



PROPOSAL

We present our commercial proposal, which provides product specification details, key features and deliverables, along with a commercial quote for final review and approval.



DELIVERY

Delivery phase captures everything subsequent to placing the purchase order. We complete the final design, obtain design approval, proceed with manufacture, quality assurance procedures, commissioning, and on-site delivery of the solution.



SUPPORT

We continue to support you through the life of the supplied solution. This includes the provision of supporting documentation, delivery of spare parts, product inspections and re-certification (if applicable), and ongoing product training (as required).



1mH & 1.5mH Top Mount*



10 x 100mmL concrete screw anchor
*90mm embedment

2mH & 3mH Top Mount*



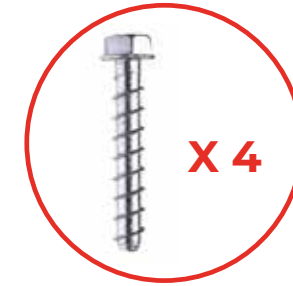
12 x 100mmL concrete screw anchor
*90mm embedment

1mH & 1.5mH Face Mount*



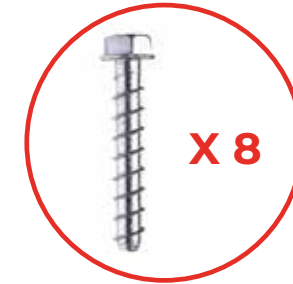
10 x 100mmL concrete screw anchor
*90mm embedment

2mH - Face Mount*



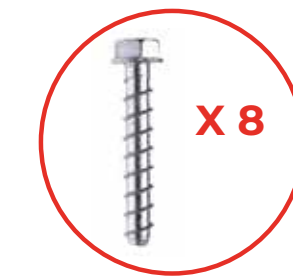
12 x 100mmL concrete screw anchor
*90mm embedment

2mH - Face Mount* (Shallow Embedment)**



QTY 4: 10 x 60mmL concrete seismic concrete screw anchor
QTY 4: 10 x 70mmL concrete seismic concrete screw anchor
*50mm embedment

2mH - Top Mount* (Shallow Embedment)**



QTY 4: 10 x 60mmL concrete seismic concrete screw anchor
QTY 4: 10 x 70mmL concrete seismic concrete screw anchor
*50mm embedment



NOT WHAT YOU'RE LOOKING FOR?
Contact the technicians at SafeSmart Access to get a site-specific temporary works design to suit your requirements.

DISCLAIMER

**Shallow embedment is subject to a site specific temporary works design.

ADAPTAPANEL CLT FOR BUILDCORP'S CROSS LAMINATED TIMBER STRUCTURES



Timber is becoming more prominent in construction projects due to its versatility, aesthetic, sustainability, and cost-effectiveness. Wood is a 100% natural, renewable, and stores carbon for life, unlike concrete and metals, wood can be regrown.

The Root of the Problem

During the construction process, timber can pose various unique challenge when compared to traditional materials such as concrete and steel. SafeSmart Access were approached by the Buildcorp site team who are working on the iconic 'The Bond Project' located in Bella Vista, NSW. Buildcorp were looking to acquire a compliant edge protection system that could be incorporated into Cross Laminated Timber (CLT) structures, providing safe access on each level of the building during the build and fit-out stage of the project.

This project was a first of its kind for Buildcorp and required delicate planning due to the complexities of importing prefabricated timber from Austria and erecting these beams on the construction site. The Cross laminated timber (CLT) presented a unique problem when it came to installing complaint edge protection systems, due to the substantial difference in pull out strength between a typical concrete slab and that of timber substrate, therefore special fixings are required to achieve compliance.

The Solution

Buildcorp were working along a strict deadline, to ensure the delivery of the project. SafeSmart worked closely with the team onsite for a viable solution utilising SafeSmart's market-leading edge protection system AdaptaPanel.

Despite the tight deadline, SafeSmart's in-house engineering team responded swiftly, providing an off the shelf solution paired with HDC-P/HDC-C timber construction screws supplied by AllFasteners. SafeSmart dramatically reduced downtime and ensured Buildcorp had a compliant handrail system, which met all deflection load requirements and relevant AS 4994 & AS 1657 Australian Standards.

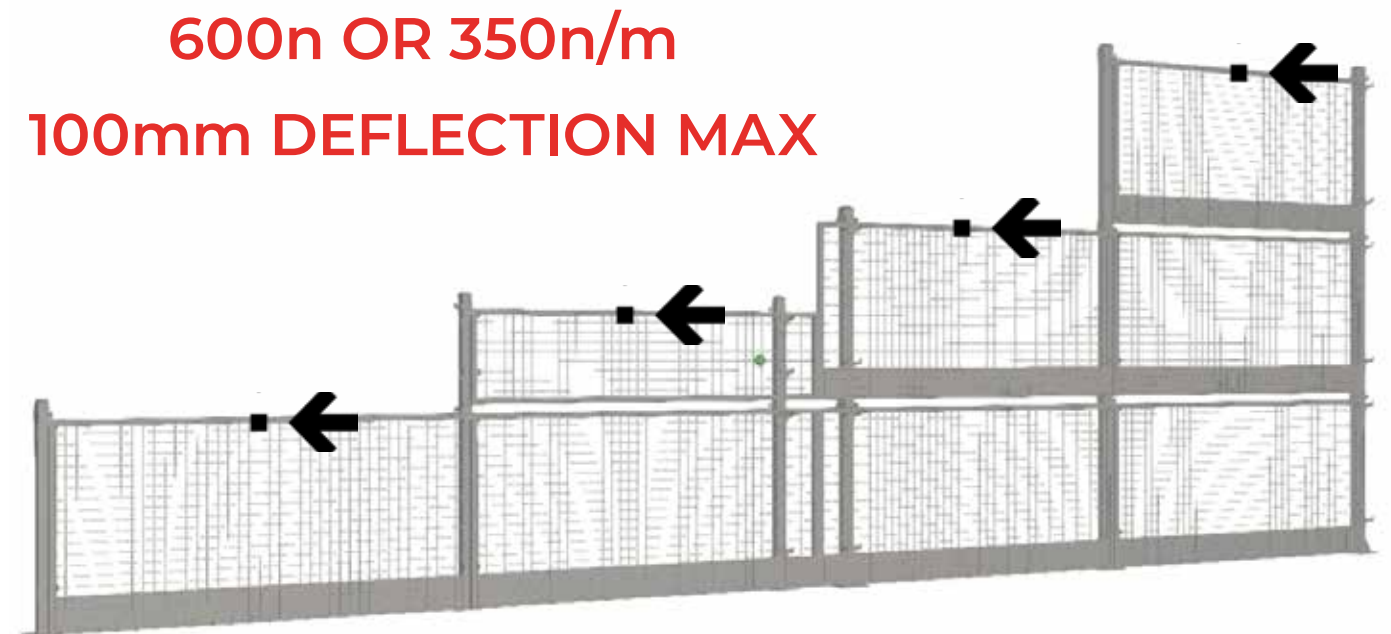
The success of the Buildcorp edge protection installation on 'The Bond' Project showcases the effectiveness of combining innovative solutions such as AdaptaPanel edge protection and specialised timber construction screws. At SafeSmart there is no one-size-fits-all model, we tailor solutions to the needs of the civil and infrastructure industries, resulting in a safer and more efficient worksite.

Did you know?

AdaptaPanel is designed to comply with the strength and deflection limitations as required for guardrail loading according to AS4994.1 AT THE TOP RAIL HEIGHT, for all post heights.

This requires the post & panel to accomodate a horizontal load of 600n and 350n/m load on the top rail and meet the maximum 100mm deflection limit compliance. All AdaptaPanel system heights comply to this requirement

EXAMPLE BELOW: 3.0m POST



Many other traditional edge protection systems are only designed to accommodate this loading at a traditional top rail height of 1mH. This means other systems designed for a 1mH could be non-compliant and unsafe to use as edge protection in areas where the load at the top rail heights of more than 1mH are required.

CODES & DETAILS

CODE	DESCRIPTION
210560	AdaptaPanel Edge Protection Work Through Series - Panel 1.0mH x 1.0mL
210561	AdaptaPanel Edge Protection Work Through Series - Panel 1.0mH x 2.0mL
210562	AdaptaPanel Edge Protection Work Through Series - Toeboard 1.2mL
210563	AdaptaPanel Edge Protection Work Through Series - Toeboard 2.2mL
210564	AdaptaPanel Edge Protection Work Through Series - Toeboard 3.2mL
210565	AdaptaPanel Edge Protection Work Through Series - Mesh 1.0mH x 1.0mL
210566	AdaptaPanel Edge Protection Work Through Series - Mesh 1.0mH x 2.0mL

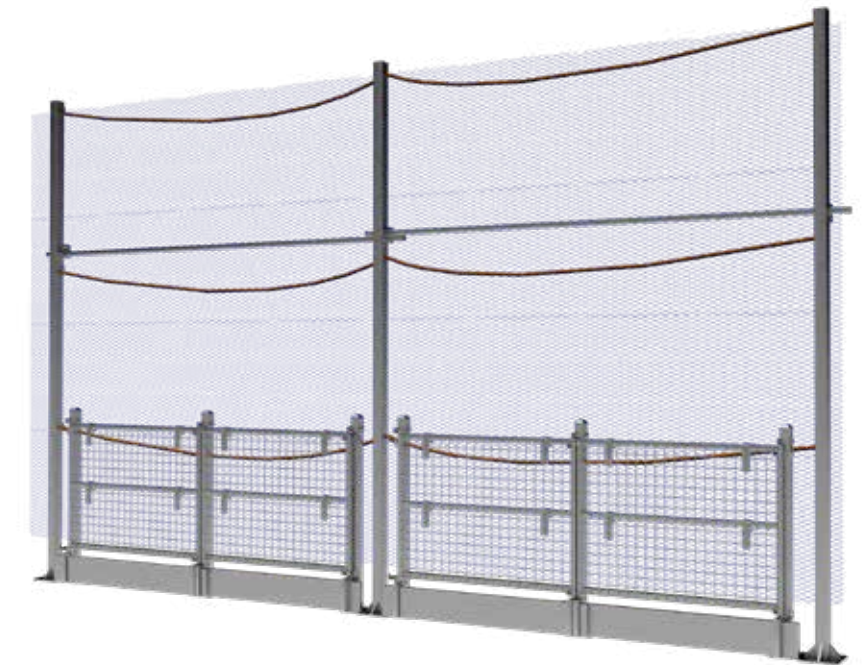
KEY FEATURES & BENEFITS

- Edge protection panels with removable mesh panels and toeboards, with direct installation to a post set within 300mm of the slab edge.
- Debris netting support posts 3m high with 20x20mm debris netting attached to the posts. The 3.0m high posts are bolted to the slab at approx. 0.5m back from the edge protection panels.
- All posts are interconnected at approx. 2m above ground.
- Optional coated finishes include galvanised and several powder coat colours for brand identification.
- Sliding safety latches retain mesh panels preventing unintentional lift-off.
- Available in multiple post heights: 1.0mH, 1.5mH, 2.0mH, and 3.0mH.
- The 1.0mH & 2.0mH panels are ideal for high rise construction and to assist with pez (perimeter exclusion zone).
- Panels may be stacked in stillages for easy storage and transport.
- Designed to meet relevant design and load requirements of AS4994.1:2009 "Temporary edge protection" standard and AS1657:2018.

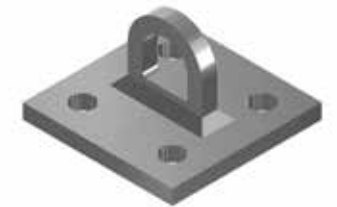


PERFECT FOR CURTAIN WALLING INSTALLATION

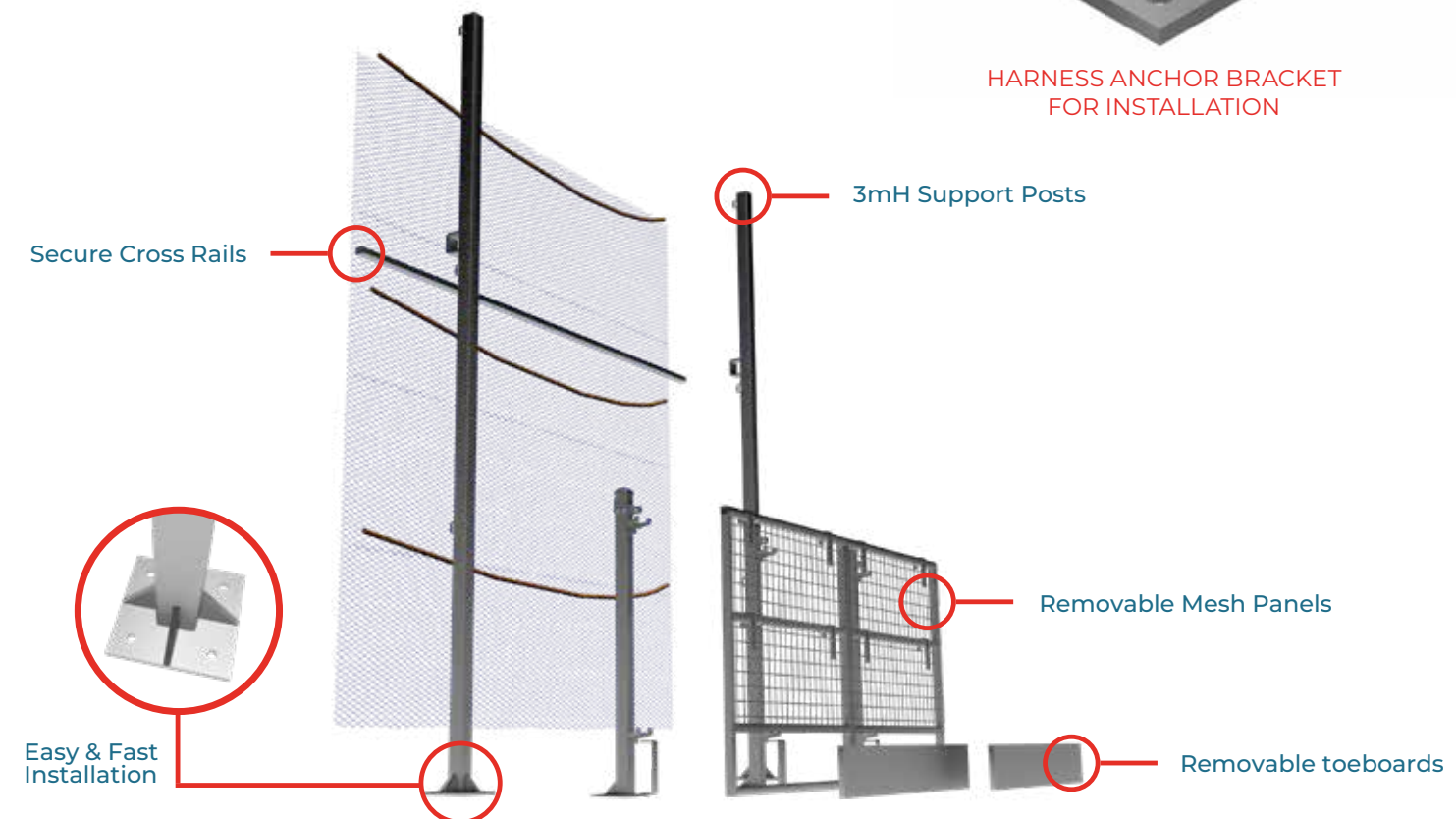
ELIMINATE HARNESES & REDUCE DEBRIS FALL RISK



Complies with AS1657 : 2018



HARNESS ANCHOR BRACKET FOR INSTALLATION



ADAPTAPANEL SLIDING PANELS



ADAPTAPANEL CRANKED POST



ADAPTAPANEL WITH CLT / TIMBER STRUCTURES



ADAPTAPANEL COUNTER WEIGHTS



ADAPTAPANEL GATE



ADAPTAPANEL 1.0mH



ADAPTAPANEL 1.5mH TOP MOUNT



ADAPTAPANEL 2.0mH TOP MOUNT



ADAPTAPANEL 3.0mH TOP MOUNT



ADAPTAPANEL 1.0mH FACE MOUNT



ADAPTAPANEL 1.5mH FACE MOUNT



**DO YOU HAVE ADAPTAPANEL ON SITE?
WE WOULD LOVE TO SEE IT!**

Show us your AdaptaPanel project by posting on LinkedIn and including the following hashtags.

**#SAFESMARTACCESS
#ADAPTAPANEL**

ADAPTAPANEL 2.0mH FACE MOUNT





SYD

02 8844 4500

MEL

03 9309 0544

BNE

07 3266 7111

PER

08 9218 9400

www.safesmartaccess.com.au

sales@safesmartaccess.com.au