



EDGE PROTECTION SYSTEMS



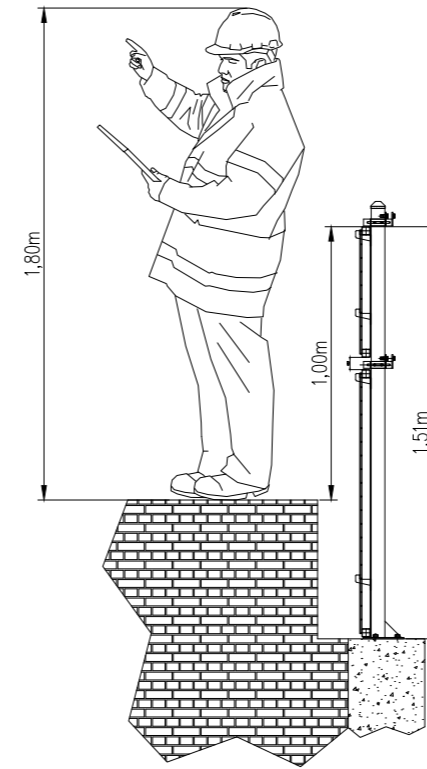
ADAPTAPANEL

CODE	DESCRIPTION
210870	AdaptaPanel Edge Protection Face Mount Post - 1.0mH
210871	AdaptaPanel Edge Protection Face Mount Post - 1.5mH
210872	AdaptaPanel Edge Protection Face Mount Post - 2.0mH
210842	AdaptaPanel Edge Protection Post - 1.0mH
210843	AdaptaPanel Edge Protection Post - 1.5mH
210875	AdaptaPanel Edge Protection Post - 2.0mH
210876	AdaptaPanel Edge Protection Post - 3.0mH
210844	AdaptaPanel Mesh Fence Panel - 0.5mH x 1.0mL
210845	AdaptaPanel Mesh Fence Panel - 0.5mH x 2.0mL
210846	AdaptaPanel Mesh Fence Panel - 1.0mH x 1.0mL
210847	AdaptaPanel Mesh Fence Panel - 1.0mH x 2.0mL

- Temporary and semi-permanent slab edge protection
- Heavy duty framed panel for longevity in harsh site conditions
- Posts bolt to slab edge, and slide-in panels are secured with a fixing bolt
- Optional coated finishes include galvanised and several powder coat colours for brand identification
- Sliding safety latches retain mesh panels, preventing unintentional lift-off
- The 1.5mH & 2.0mH panels are ideal for high rise construction and to assist with PEZ (Perimeter Exclusion Zone)
- Panels may be stacked for easy storage and transportation
- Designed to meet relevant design and load requirements of AS4994.1:2009 "Temporary edge protection" standard and AS1657 : 2018



ADAPTAPANEL CONFIGURATION EXAMPLES



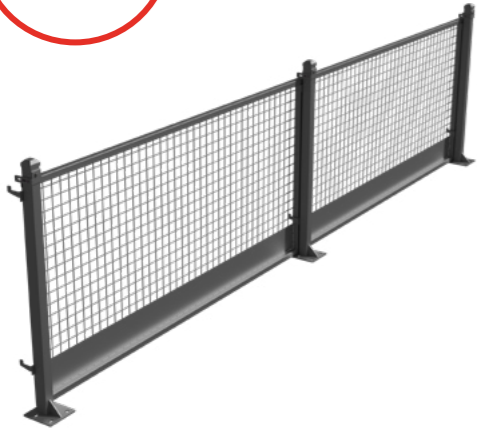
ADAPTAPANEL FACE MOUNT POST

ADAPTAPANEL SLAB MOUNT POST



ADAPTAPANEL CONFIGURATION EXAMPLES

1m Post



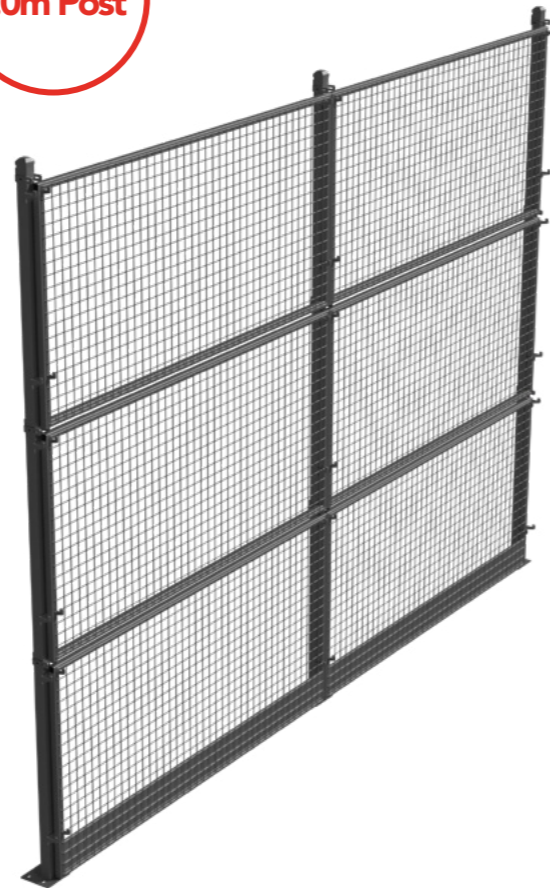
1.5m Post



2.0m Post



3.0m Post



ADAPTAPANEL 'ON-SITE' GALLERY



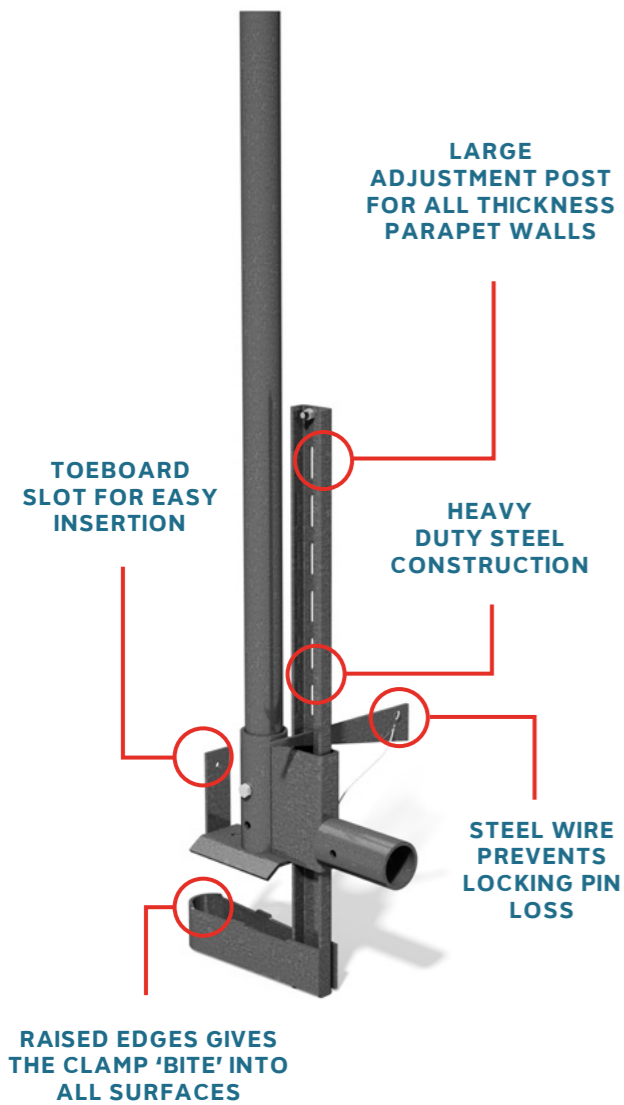
KING KLAMPZ EDGE PROTECTION

- Multipurpose King Klampz operate both horizontally for use on a parapet, and vertically for slab edges

COMPLIANCE

To comply with the Health and Safety in Employment Act 1992 and Regulations 1995, exposed sides and ends of working platforms above three metres must be protected by guard rail and toe boards.

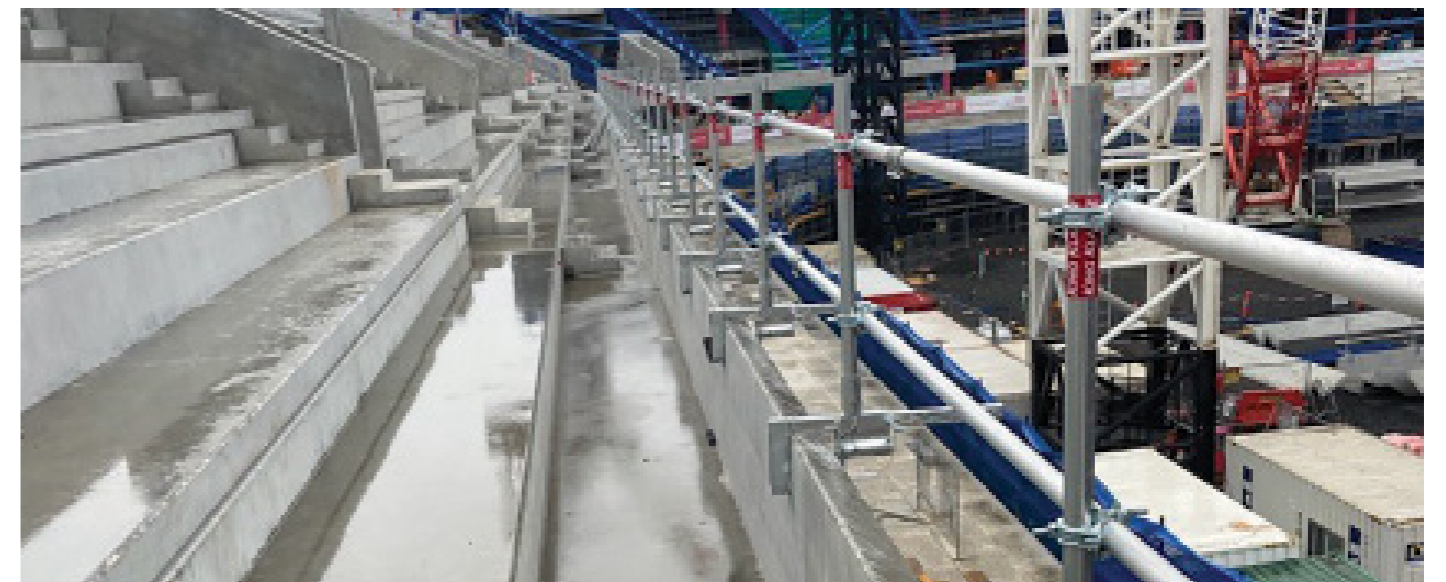
Complies with
AS/NZS
4994.1:2009



Code	Description
210272	Multipurpose King Klampz

KING KLAMPZ EDGE PROTECTION

- Perfect for rail platform edge protection
- Negates the need to use fasteners - saves time and money
- Self install - no scaffolders or riggers required
- Can be used on a finished surface - no remedial works required



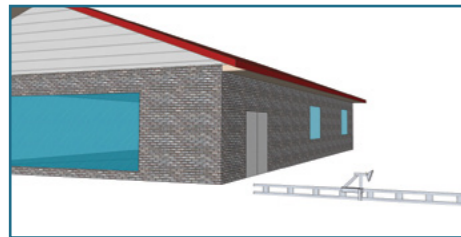
EDGE PROTECTION



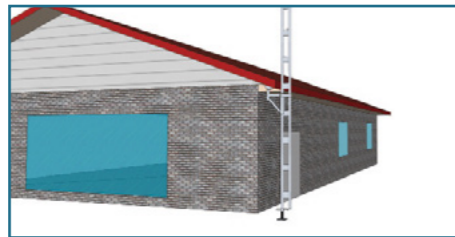
EASYRAIL ROOF EDGE PROTECTION

- EasyRail roof edge protection is available in five standard post heights. 1m, 2m, 3m, 4m & 6m.
- For heights above 4m. simply attach two posts together using the EasyRail joining spigot
- For installation, the cantilever bracket simply slides up the posts and is tightened under the eaves
- Using couplers and aluminium tube, base, mid and top rails can be installed in seconds
- EasyRail is the ultimate safe solution for any low level roof edge protection application you may have

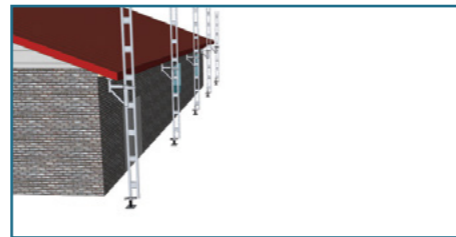
SET UP GUIDE AND QUICK INSTALLATION TIPS



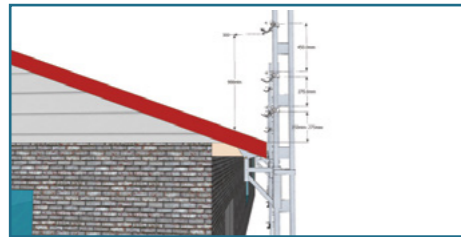
STEP 1
MEASURE THE HEIGHT TO THE UNDERSIDE OF EAVES AND PLACE THE CANTILEVER BRACKET AT CORRECT HEIGHT ON THE EASYRAIL POST



STEP 2
PLACE BASE OF POST OVER A SCREW JACK AND LEAN AGAINST THE ROOF EDGE OF THE BUILDING. REPEAT AND SPACE NO MORE THAN 4m TO DESIRED LENGTH



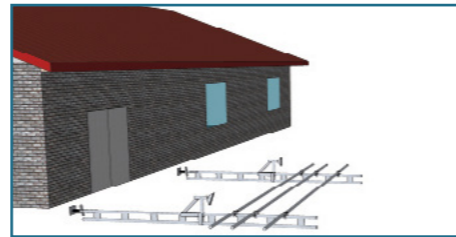
STEP 3
ADJUST THE SCREW JACK UNTIL THE CANTILEVER BRACKET IS HELD FIRM UNDER THE EAVES. ENSURE THE POST IS VERTICAL AND THE CANTILEVER BRACKET IS UNDER A SOLID MEMBER. IF REQUIRED, FIX BRACKET TO UNDERSIDE OF EAVES



STEP 4
USING A LADDER, PLACE RAIL COUPLER AT A POINT 200mm ABOVE THE ROOF LINE. FIX 2 MORE COUPLERS AT 500mm AND 1000mm ABOVE THIS SAME POINT. ENSURE THE COUPLER "TONGUES" ARE POSITIONED FACING UPWARDS TO HOLD HANDRAIL



STEP 5
USING A LADDER, PLACE THE ALUMINIUM TUBE RAILS IN POSITION, THEN TIGHTEN EACH COUPLER



QUICK INSTALL TIP:
IF 2 PEOPLE ARE AVAILABLE THEN THE HORIZONTAL RAILS CAN BE FITTED TO THE POSTS WHILE ON THE GROUND. LIFT THE COMPLETE ASSEMBLY INTO PLACE AND TIGHTEN SCREW JACKS UNDER THE EAVES

EDGE PROTECTION



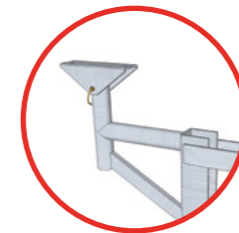
SCAN CODE TO VIEW VIDEO

Code	Description
210227	1.0m EasyRail Post
210228	2.0m EasyRail Post
210229	3.0m EasyRail Post
210230	4.0m EasyRail Post
210239	6.0m EasyRail Post
210231	EasyRail Cantilever Bracket
230233	EasyRail Screw Jack
210232	Scaffold Swivel Coupler
210237	Fixed Double Coupler
290704	6.05mL Scaffold Tube
HS046	Internal Joiner

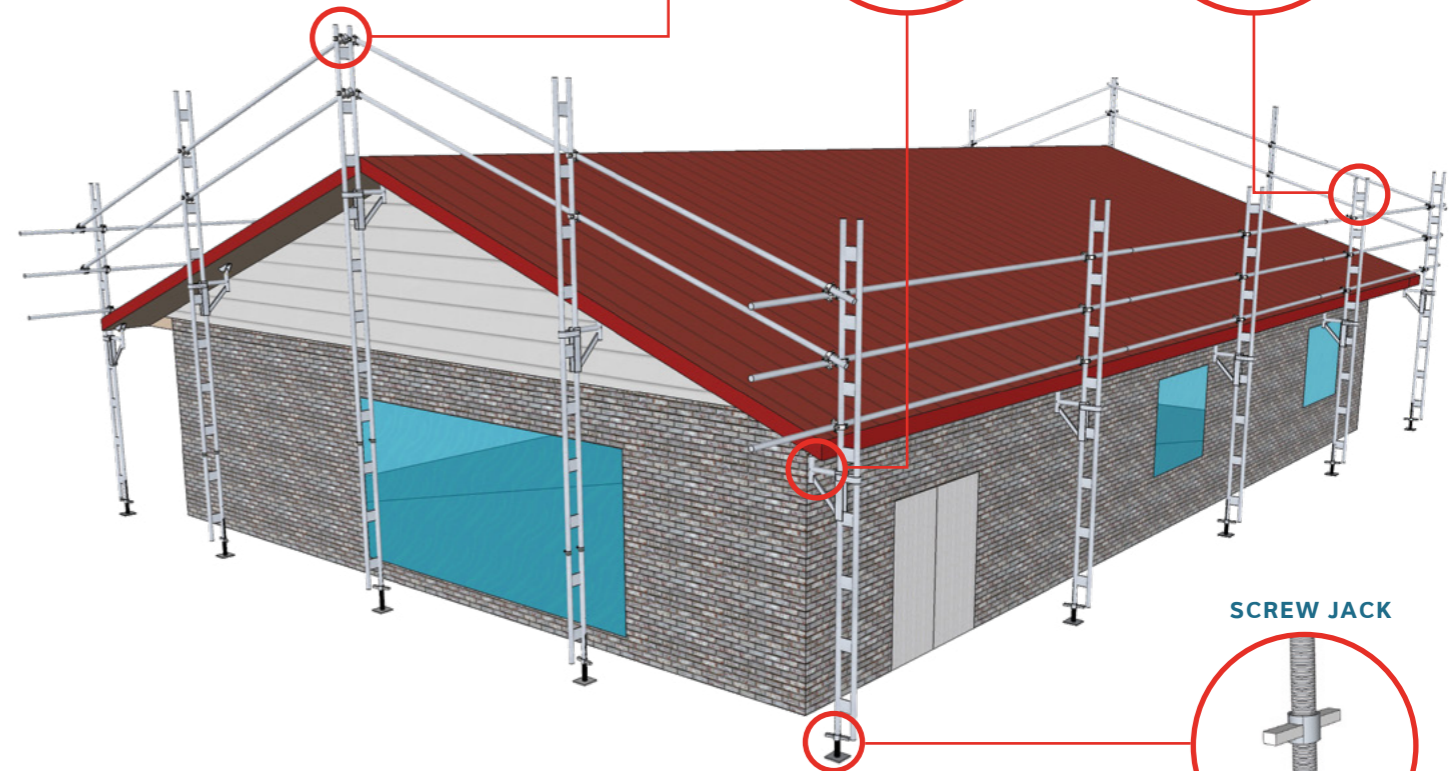
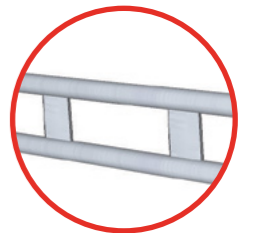
SWIVEL COUPLER



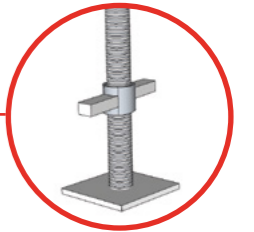
CANTILEVER BRACKET



EASYRAIL POST



SCREW JACK



Ideal for low level roofing applications



Quick and easy to install- no fixings required



EASYDECK EDGE PROTECTION PACK & COMPONENTS

- A high strength, lightweight welded aluminium structure
- Protect from roof falls while working on the soffit and wall of the building
- Free-standing system - does not require any fixing in
- Fast, two person set up
- Unique combination of the EasyRail edge protection system, SafeSmart Access prefabricated platforms and cantilever support brackets
- The system incorporates standard SafeSmart aluminium scaffold components, such as guardrails and platforms, save money by adding to the system you already have
- Certified aluminium or wooden planks can also be used to create a work platform
- Height adjustable screw jacks allow for uneven ground
- Platform height is adjustable along the length of the EasyRail post



PLATFORM SUPPORT BRACKET

Attaches to the roof post and supports the work platform.



Code
210231

EASYRAIL ROOF POST

Strong and lightweight. Can be joined vertically.



Code
210230

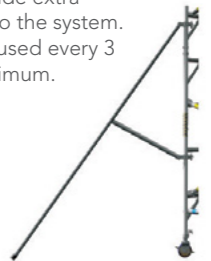
SCREW JACKS



Code
230233

OUTRIGGERS

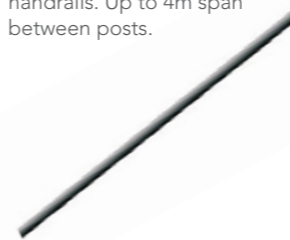
Connect to roof posts and provide extra stability to the system. Must be used every 3 bays minimum.



Code
HS035

ALUMINIUM EASYRAIL TUBE

Can be cut to specific lengths. Used for toerail, midrail and handrails. Up to 4m span between posts.



Code
290704

90° FIXED COUPLER

Used for attaching horizontal rails to the posts.



Code
210237

SWIVEL COUPLER

Used for attaching guardrails to the posts that are not 90 degrees to it. E.g. gable ends.



Code
210232

BASE FRAME

Supports the roof post using two internal joining spigots.



Code
210420

INTERNAL JOINING SPIGOT

Used for joining tubes together end to end by expanding inside them.



Code
HS046

STANDARD PLATFORM

Hook over the platform support bracket.



Code
HS013

SNAPLOCK GUARDRAIL

Used to connect the base frames together longitudinally. Can also be used as a guardrail.



Code
HS033

DIAGONAL BRACE

Must be used every 4 bays minimum.



Code
210423

REINFORCED GRASPER LEDGER (2 sizes)

Used to span across corners.



Code
210081 & 210082

PROSCAF SWING GATE

Used where the ladder access is outside the platform.



Code
210078

HATCH PLATFORM

Ladder protrudes through the hatch lid for use when the ladder access is within the platform.



Code
HS036

HANDRAIL POST

Attaches to the inner sleeve on the platform support bracket where the platform edge is greater than 225mm away from the wall.



Code
210079

CUSTOM GIRDER EDGE PROTECTION



GUARDRAIL POSTS

- Temporary bolt down edge protection for slab edges, walkways and pedestrian delineation
- Handrail to be secured using scaffold coupler
- 1.2mH to suit tube and coupler handrail
- Handrail is scaffold tube or similar - 48.3mm OD
- Handrail spacing limited to 2m
- Meets and passes all load requirements per AS/NZS1576-AS1657

Code	Description
290686	Bolt Down Guardrail Post, 1.2mH
210879	Multi Mount Guardrail Post



Bolt Down Guardrail Post, 1.2mH

Multi Mount Guardrail Post

ADJUSTABLE CHASSIS RAIL EDGE PROTECTION

- Compatible with any haul truck and can be fitted on a square or rolled chassis
- Adjustable from 0.9mL to 3.4mL giving it the flexibility to fit any workspace
- The clamping system provides a positive lock onto the chassis frame, rather than merely slipping over the chassis as other systems do
- Eliminates the need for a separate chassis rail kit for each truck
- Easily and quickly adjusted using hand tightening couplers



Complies with
AS/NZS
4994

Code	Description
210880	Haul Truck Chassis Guardrail Frame– Telescopic. Adjusts in length from 1400mmL – 2400mmL.
210881	Haul Truck Chassis Guardrail Frame– Telescopic. Adjusts in length from 900mmL – 1500mmL.
210882	Haul Truck Chassis Guardrail Frame– Telescopic. Adjusts in length from 2400mmL – 3400mmL.
210883	Haul Truck Chassis Guardrail Frame– Telescopic. Adjusts in length from 2000mmL – 3000mmL.

NON-DRILL

Code	Description
230121	NON-DRILL Post – 1.060m
230122	NON-DRILL 2.5T Clutch
230123	NON-DRILL 5.0T Clutch
230124	NON-DRILL 10.0T Clutch and extra baseplate
230125	NON-DRILL Modified Clutch for EdgePro/Hairpin Lifter - Type 2 To Suit Ancon 4t (Red)
230126	NON-DRILL Modified Clutch for EdgePro/Hairpin Lifter - Type 1 To Suit; Ancon 8.5t (Purple), REID 7t Jaws (Orange), REID 8.5t 3DX (Yellow)
230127	NON-DRILL Modified Clutch for EdgePro/Hairpin Lifter - Type 3 To Suit; Ancon 15t (Green), REID 10t Jaws (Blue)
230128	NON-DRILL Modified Clutch for 16mm Ferrule/Drop In
230129	NON-DRILL Modified Clutch for 20mm Ferrule/Drop In
230120	NON-DRILL Post AdaptaPanel Bracket

- Eliminate the need for drilling with the NON-DRILL edge protection and handrail system
- Connect to lifting anchors on precast structures
- NON-DRILL works seamlessly with 2.5, 5, 10T connections and EdgePro/Hairpin lifting anchors
- Connecting to the anchor eliminates human error and meets industry standards for edge protection
- With NON-DRILL, you avoid costly labour hire, drilling into concrete, exposing steel and cutting off bolts
- AS/NZS 1170.1 Structural design actions, Part 1: Permanent, imposed and other actions
- AS 1657:2018 Fixed platforms, walkways, stairways & ladders:
 - under 350N/m, or “Category 1” lateral loading
 - under 750N/m, or “Category 2” lateral loading (using the same connection, increasing the post thickness)



NON-DRILL AdaptaPanel Bracket – for use with AdaptaPanel Panels



CUSTOMISE YOUR POST & CLUTCH COMBO

CLUTCH OPTION

NON-DRILL Post with Clutch 2.5T, 5T or 10T



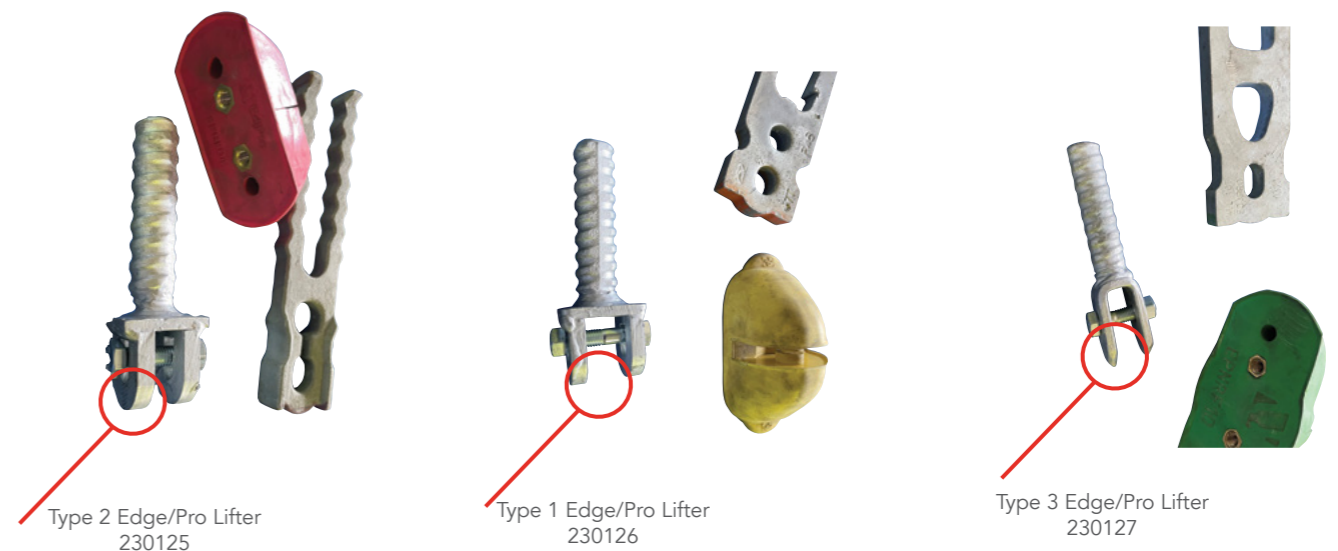
FERRULE/DROP IN OPTION

NON-DRILL Post with modified Clutch for 16mm or 20mm ferrule/drop in



EDGEPRO/HAIRPIN LIFTER OPTION

NON-DRILL Post with modified Clutch for EdgePro/Lifter 4T, 7T or 10T



TERMS & CONDITIONS

1. Copyright SafeSmart Access 2022. ABN 20 024 050 645 - No part of this publication maybe reproduced without the written permission of SafeSmart Access.
2. SafeSmart Access has made every effort to portray accurate descriptions and information within this catalogue. No liability is accepted in the event of errors or omissions.
3. Where specifications are provided they are intended as a guide only. Please enquire from our staff for full details of product at time of enquiry.
4. Products may be deleted, amended, substituted or changed at the sole discretion of SafeSmart Access.
5. The customer/user must establish the suitability of the product purchased for their own safe use.
6. Trade Marks. Where any registered trade mark has been used it is with recognition of the owner's right.
7. Any measurements shown are intended as a guide only. Please confirm any critical measurement with SafeSmart Access.
8. Compliance to standards may be in part or whole subject to the nature of the product.



SYD 02 8844 4500 - MEL 03 9309 0544 - BNE 07 3266 7111

www.safesmartaccess.com.au