



ADJUSTASTAIRS



ADJUSTASTAIRS STORY

There has been a growing drive on construction projects worldwide to eliminate unsafe ladders, without the hassle of building up a scaffold to access between levels on sites. That's why SafeSmart are pleased to introduce the AdjustaStairs. This product is quickly becoming a popular choice for industries and trades that need safe and efficient temporary multi-level height access.

It is our customer base who helped us identify this need in the market. And since designing and developing our first set of portable stairs for those clients, the AdjustaStairs system has evolved into a recognisable and trusted product around the world.

When looking for market-leading portable stairs, look no further than AdjustaStairs.

SUMMARY OF BENEFITS

- Safer than a ladder – allow multiple users at once to carry tools and equipment between levels.
- 5 minutes set up time.
- Instant adjustment – simply place the stairs at the level you require, and the treads will self-level to suit the height. Once the handrails are raised and the stairs fixed top and bottom, they're ready to use – no additional sign-off or certification required.

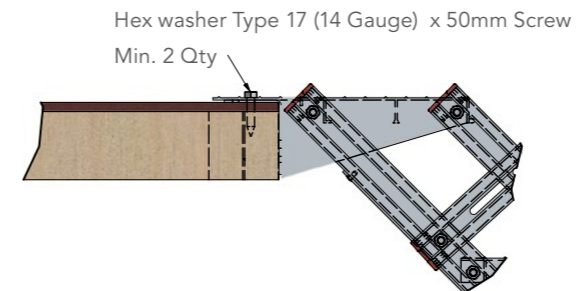


ADJUSTASTAIRS: HOW DO THEY SELF-LEVEL AND ATTACH?

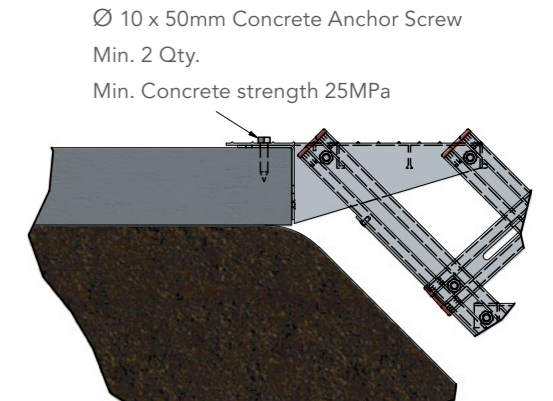
ADJUSTASTAIRS

This innovative design allows the treads to move with the stringers. Treads will self-level to provide a firm, flat surface at the desired height. Once level, they are fixed to the support surface as shown below.

TIMBER FIXING - TOP STEP

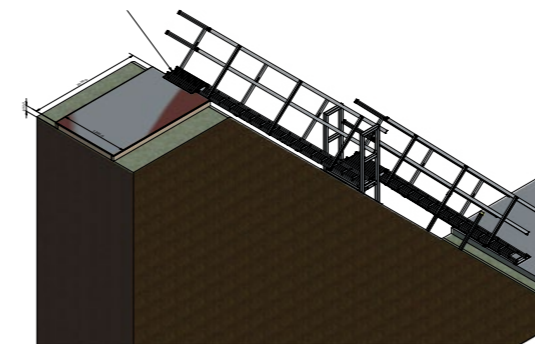


CONCRETE FIXING

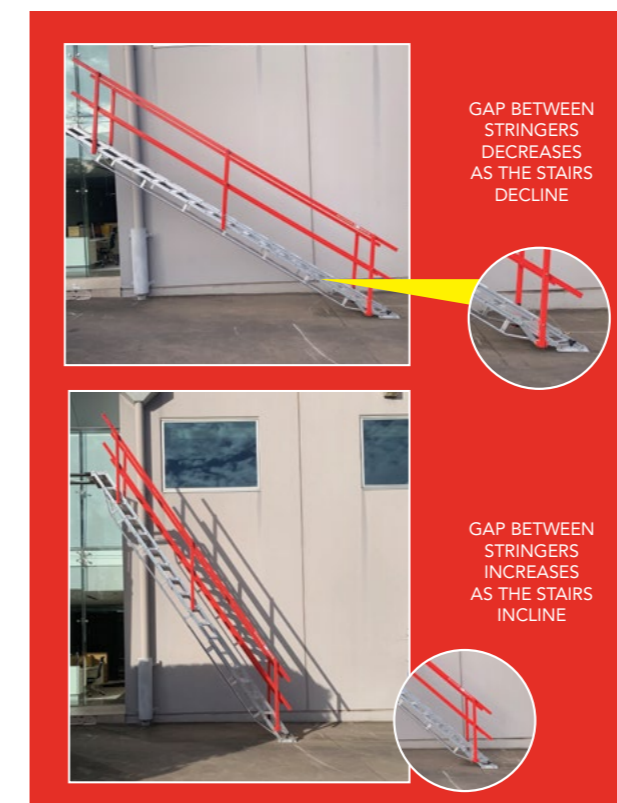


FIXING DETAILS

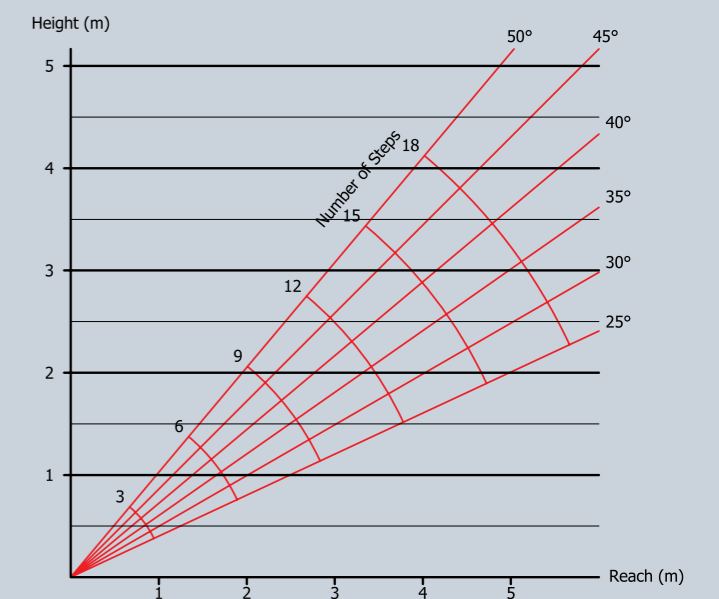
Top Step Fixings as noted above:



SCAN CODE
TO VIEW
ADJUSTASTAIRS
VIDEO



INCLINATION DIAGRAM



NB- National Regulation may impose other requirements. Take these into consideration.

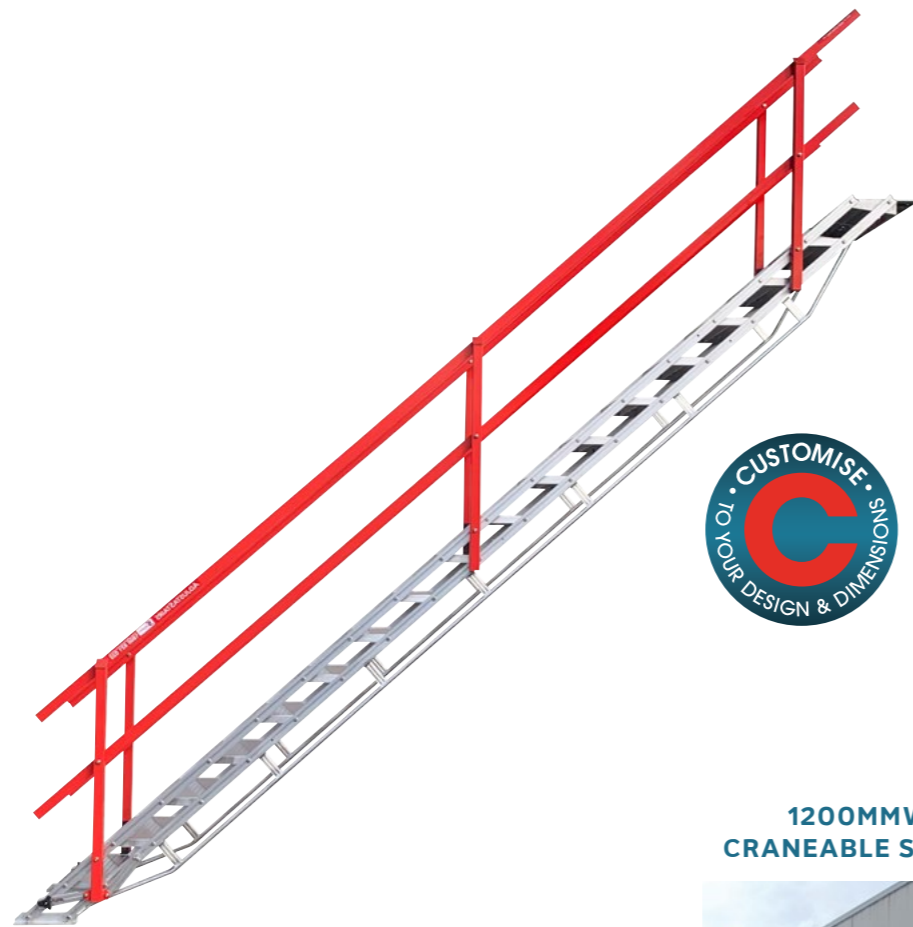
ADJUSTASTAIRS ADVANTAGES

ADJUSTASTAIRS

- Treads self level to suit any height within the stair's range
- Lightweight, heavy duty aluminium for easy relocation around the site
- One piece unit can be set up in seconds and joined in-line
- Safe, fast, easy access between floors, decks & in trenches
- Folds flat for easy storage & transportation
- Durable - built to last
- Available with fibreglass stiles and rails for electrical safety
- Available with open raised tread to shed snow, ice and mud, and increase grip



OPTIONAL OPEN RAISED TREAD



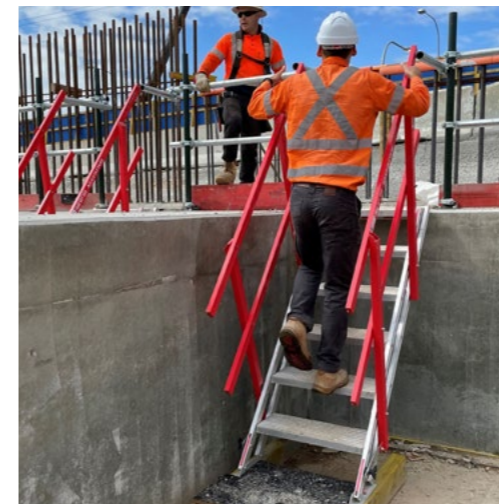
1200MMW CRANEABLE STAIRS



STAIRS CAN BE JOINED FOR BATTER ACCESS



ADJUSTASTAIRS ADVANTAGES



ADJUSTASTAIRS

MODELS AVAILABLE

600MM WIDE ALUMINIUM

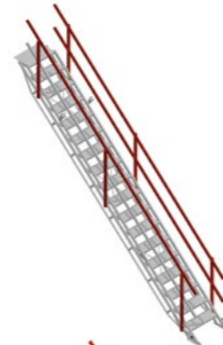
Code	Steps	Suggested Height Range
210818	3	0.49M - 0.67M
210813	6	0.97M - 1.33M
210814	9	1.43M - 2.0M
210815	12	1.91M - 2.67M



2.5kPa
Weight Rating

600MM WIDE ALUMINIUM

Code	Steps	Suggested Height Range
210816	15	2.39M - 3.33M with support truss under stringers
210817	18	2.87M - 4.0M with support truss under stringers



2.5kPa
Weight Rating

1200MM WIDE ALUMINIUM

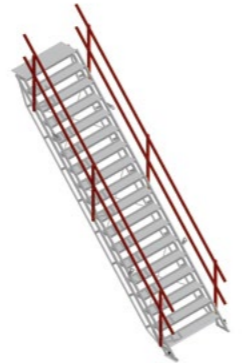
Code	Steps	Suggested Height Range
210821	3	0.49M - 0.67M
210822	6	0.97M - 1.33M
210823	9	1.43M - 2.0M



2.5kPa
Weight Rating

1200MM WIDE ALUMINIUM

Code	Steps	Suggested Height Range
210824	12	1.91M - 2.67M with support truss under stringers
210825*	15	2.39M - 3.33M with support truss under stringers
210826*	18	2.87M - 4.0M with support truss under stringers



2.5kPa
Weight Rating

600MM WIDE FIBREGLASS

Code	Steps	Suggested Height Range
210833	6	0.94M - 1.3M
210743	7	1.1M - 1.52M



300kg
Weight Rating

*AS/NZS 1576.1 & AS1657 •Meets stair tread and handrail loading requirements. •Can be configured to meet respective geometry requirements

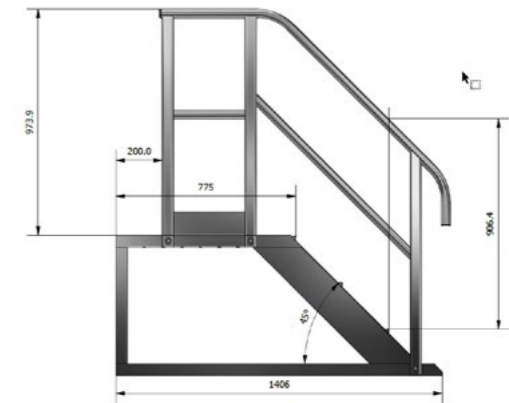
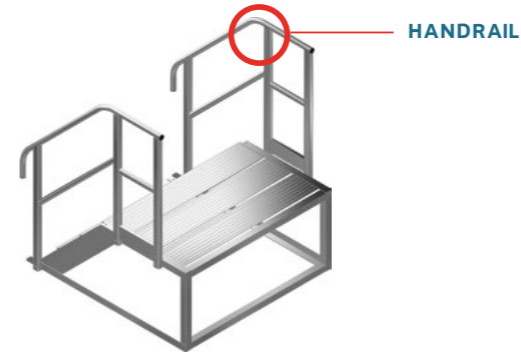
*Lifting Lugs included ^Suggested height range of stairs listed allows for an angle of slope of between 32 – 48 degrees

ACCESSORIES

STEP EXTENSION

Code	Description	Width	Height
210275	Step Extension with 775mm Landing to suit 600mmW stairs	600mmW	600mmH
210276	Step Extension with 775mm Landing to suit 1200mmW stairs	1200mmW	600mmH
210277	Retro-Fit Handrail Kit to Suit AdjustaStairs Step Extension Landings		

- Add 600mm of height to either single or double width AdjustaStairs
- Can be used as an independent stair
- Suits applications where 18 steps or more are required



ADJUSTASTAIRS FOR TRUCK & LARGE VEHICLES

Code
210813

- Developed specifically for access to truck trays
- No fixings required
- Treads self level to suit tray heights of 0.9m - 1.4m

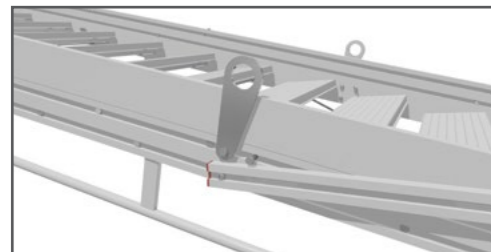
Complies with AS/NZS 1576 : 2010 **2.5kPa** Weight Rating



LIFTING LUGS

Code	Description
210838	Lifting Lugs

- Attach to any aluminium AdjustaStairs model
- Compatible with 600mmW or 1200mmW AdjustaStairs



SCAFFOLD MOUNT HOOK

Code	Description
210819	Scaffold Mount Hook

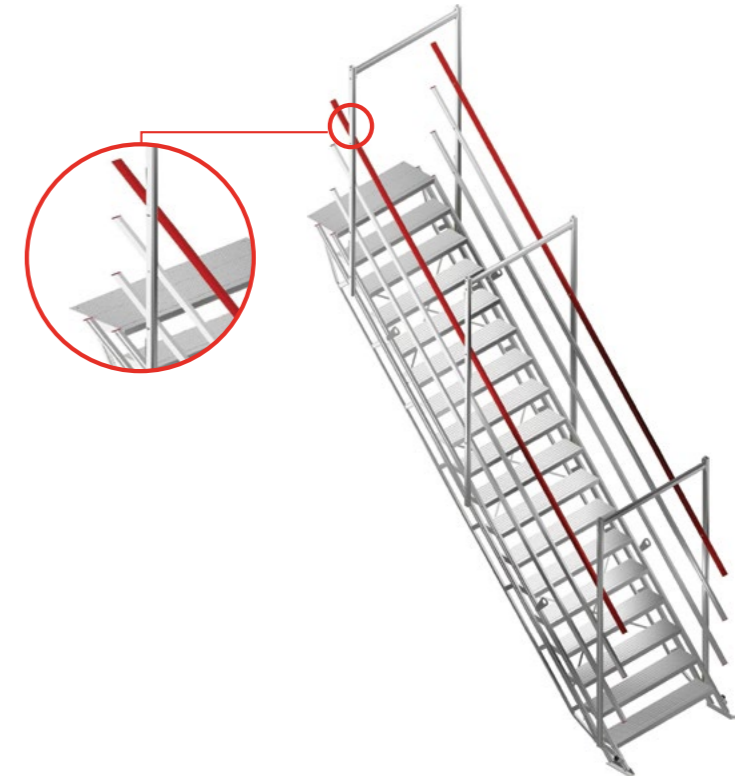
- Replaces the AdjustaStairs top step and clamps stairs to a scaffold tubular ledger
- Compatible with 600mmW AdjustaStairs



1400MMH ADJUSTASTAIRS EXTENDED HEIGHT GUARDRAIL KIT

Code	Steps	Description
210950	3	AdjustaStairs Extended Height Guardrail Kit- suits 1200mmW configuration
210951	6	AdjustaStairs Extended Height Guardrail Kit- suits 1200mmW configuration
210952	9	AdjustaStairs Extended Height Guardrail Kit- suits 1200mmW configuration
210953	12	AdjustaStairs Extended Height Guardrail Kit- suits 1200mmW configuration
210954	15	AdjustaStairs Extended Height Guardrail Kit- suits 1200mmW configuration
210955	18	AdjustaStairs Extended Height Guardrail Kit- suits 1200mmW configuration

- Adds an additional handrail to increase the handrails to a height of 1.4m
- Provides increased protection when moving on stairs
- Increased strength and stability for critical applications



MIDRAILS

Code	Description
210852	Handrail/Midrail to suit 3 Step single width Adjustastairs, 1127mm long
210853	Handrail/Midrail to suit 6 Step single width Adjustastairs, 1725mm long
210854	Handrail/Midrail to suit 9 Step single width Adjustastairs, 3055mm long
210855	Handrail/Midrail to suit 12 Step single width Adjustastairs, 3952mm long
210856	Handrail/Midrail to suit 15 Step single width Adjustastairs, 4849mm long
210857	Handrail/Midrail to suit 18 Step single width Adjustastairs, 5746mm long
210858	Handrail/Midrail to suit 3 Step Double Width Adjustastairs, 1054mm long
210859	Handrail/Midrail to suit 6 Step Double Width Adjustastairs, 1706mm long
210860	Handrail/Midrail to suit 9 Step Double Width Adjustastairs, 2608mm long
210861	Handrail/Midrail to suit 12 Step Double Width Adjustastairs, 3505mm long
210862	Handrail/Midrail to suit 15 Step Double Width Adjustastairs, 4402mm long
210863	Handrail/Midrail to suit 18 Step Double Width Adjustastairs, 5299mm long

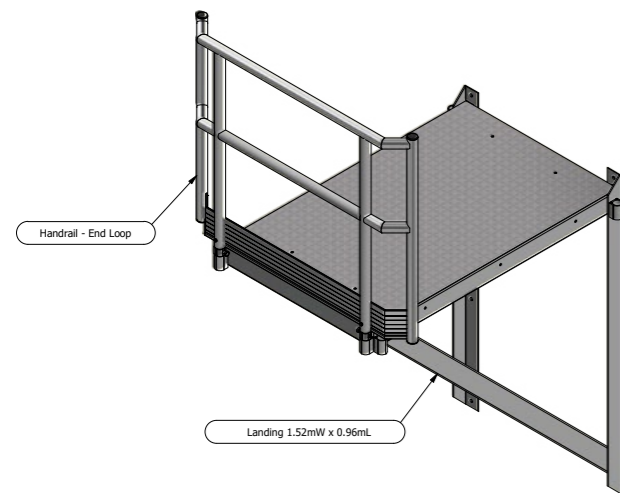


HANGING LANDING

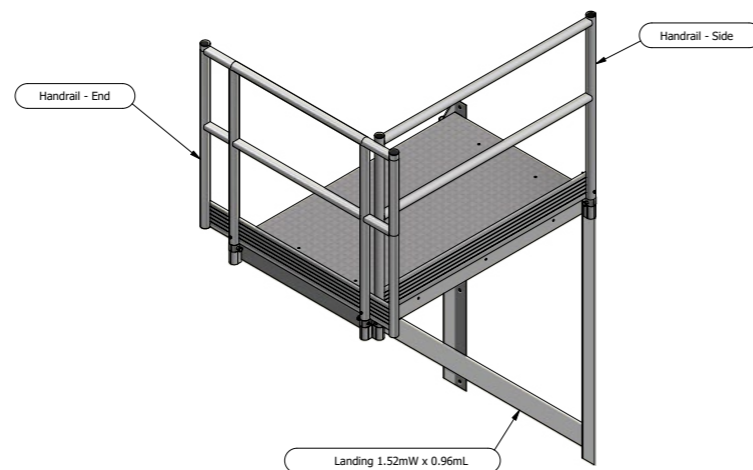
Code	Description
210278	AdjustaStairs Hanging Landing - 1.52mW x 0.96mL with wall braces
210919	AdjustaStairs Hanging Landing End Loop Handrail - suits 1200mmW configuration
210920	AdjustaStairs Hanging Landing End Flat Guardrail - suits 600mmW configuration
210921	AdjustaStairs Hanging Landing Side Flat Guardrail - suits 600mmW configuration

- Perfect to create a long stair system into a pit or shaft
- Much smaller footprint than a scaffold tower - perfect for sites where space is limited

LANDING WITH LOOP END GUARDRAIL (1200mmW Stair Configuration)



LANDING WITH END & SIDE GUARDRAIL (600mmW Zig-Zag Stair Configuration)



INDUSTRY STORY:

CPB Nepean Hospital - AdjustaStairs



THE CHALLENGE

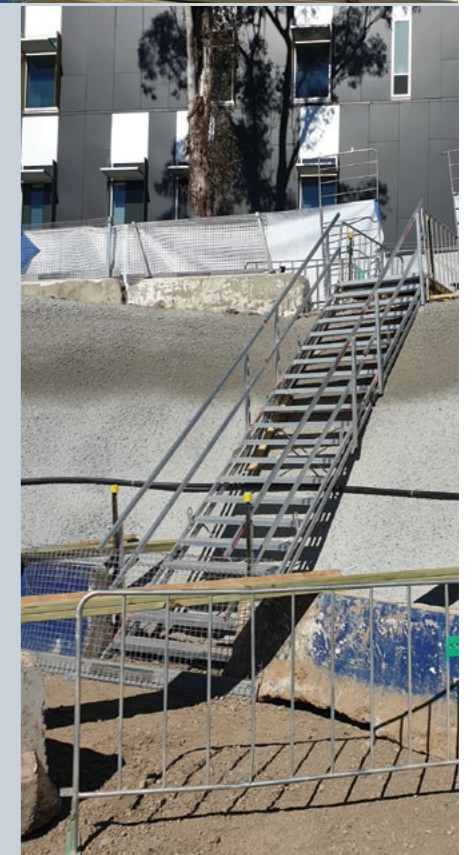
Since the foundation of their construction business in 1949, CPB Contractors has been designing and constructing major civil engineering and building projects across Australasia. CPB Contractors have been selected by the NSW government to deliver Penrith's Nepean Hospital Redevelopment Stage 1. The multi-million dollar project involves the construction of a new 14-storey clinical building. Access down a shotcrete batter was required to allow worker access to the base levels of construction. A scaffold stair would be too costly and time-consuming for install and relocation.

THE SOLUTION

The client approached Australian temporary height access supplier SafeSmart Access for a way around it. SafeSmart Access's AdjustaStairs was the preferred option, joining the 12 and 9 step AdjustaStairs together provided the optimum solution to get down the 6mL batter. 1200mm stairs were selected for two way access.

THE RESULT

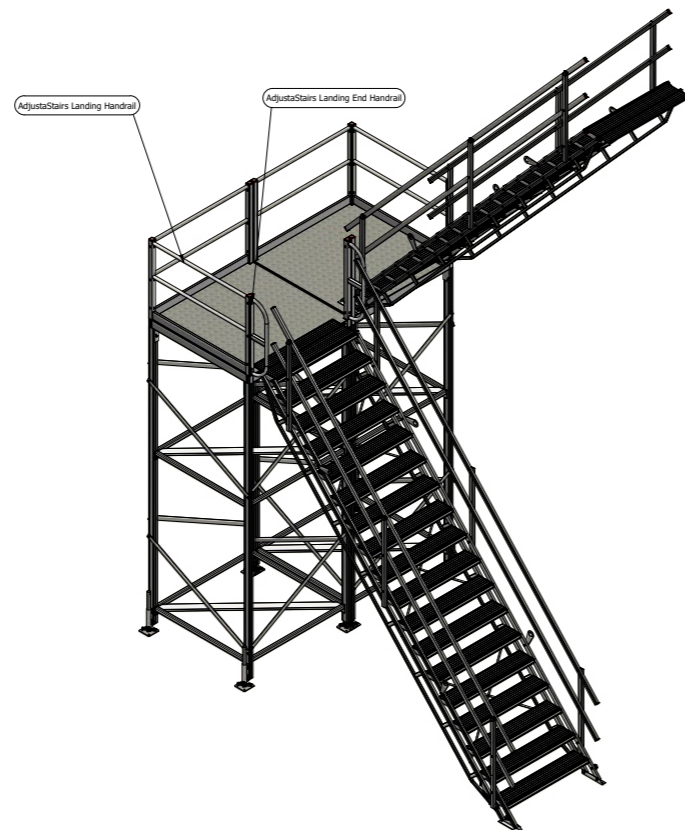
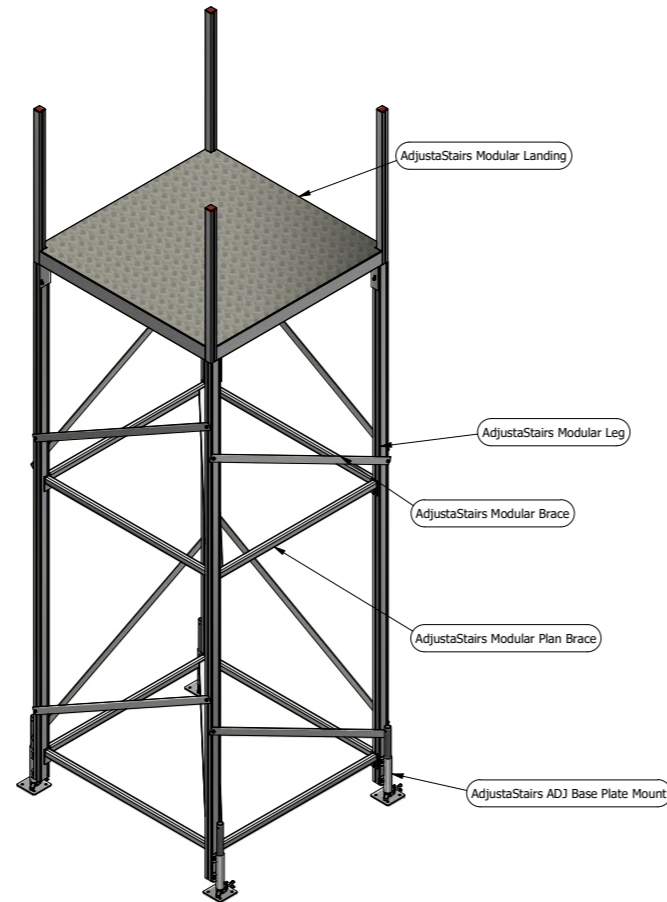
The client experienced instant efficiency improvements on the site, the AdjustaStairs were installed in minutes, required no scaffold tags and provided the most efficient means of stair access to allow a free flow of workers carrying tools and equipment.



MID LANDING SYSTEM

Code	Description
210925	AdjustaStairs 1mH Mid Landing
210926	AdjustaStairs 2mH Mid Landing
210927	AdjustaStairs 3mH Mid Landing
210928	AdjustaStairs 4mH Mid Landing

- AdjustaStairs Mid Landing System available for landing heights 1-4m
- 1500mm x 1500mm landing
- Custom sizes available for single and double width AdjustaStairs



INDUSTRY STORY:

GCB Constructions -
AdjustaStairs with Mid Landings



THE CHALLENGE

GCB Constructions has over 30 years of experience across all sectors of construction. They were recently selected as part of the Vantage Royal Pines project in Queensland. A cost effective, efficient and compliant method of access was required into a basement on the construction site. Traditionally, a this access would be solved with a scaffold stair, however, in this instance it would be difficult to change and move, time-consuming for install and alot of downtime when the access point were to change.

THE SOLUTION

After initial consultation with SafeSmart Access, it was determined that the AdjustaStairs with Mid Landing would be the perfect solution. Faster to install, compliant to site conditions and easy to change configuration.

THE RESULT

The solution proved safer and more cost-effective for site access. Workers could easily access the two levels of excavation via one staircase consisting of two AdjustaStairs and one Mid Landing. Above all else, SafeSmart delivered on time with every safety concern addressed thoroughly, and a significant budget saving achieved using the non-scaffold methodology.



INDUSTRY APPLICATIONS

BATTER ACCESS

- Stairs will self-level to suit the angle of the batter
- Multiple stairs can be joined end to end to span any batter length
- Top and mid landings can be constructed from Proscaf
- Fixing options include: bolting top of stairs to timber sleeper or structural ply, pinning into dirt at the bottom



SCAN CODE TO VIEW
ADJUSTASTAIRS
MARIBYRNONG RIVER SEWER UPGRADE
CASE STUDY VIDEO



EXCAVATION ACCESS

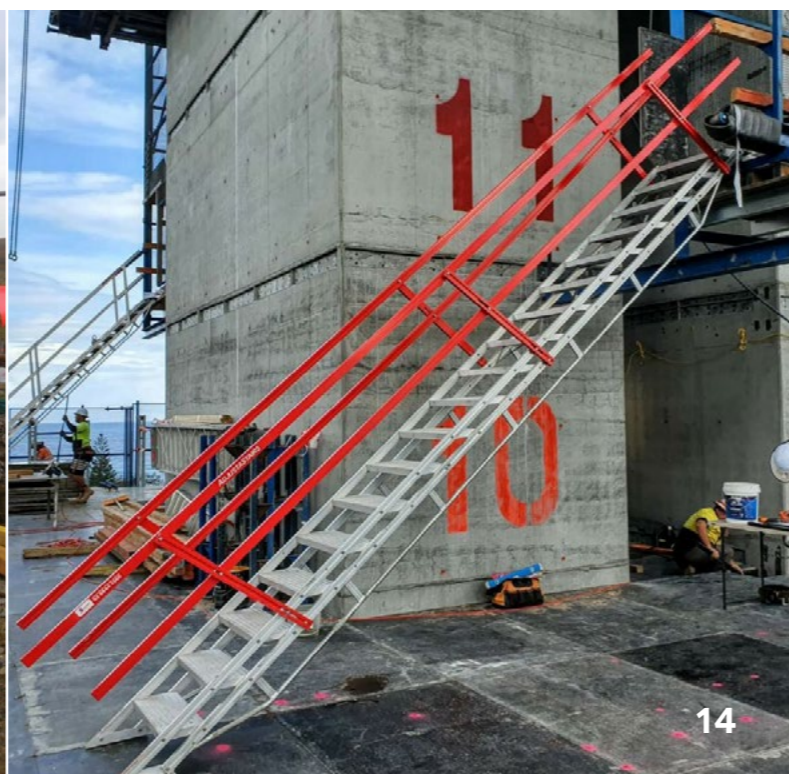
- Adjustability of the stairs makes them ideal for excavation access, where levels are constantly changing



FORMWORK ACCESS

- Use AdjustaStairs instead of a ladder for your primary or secondary access
- Much quicker to set up and move than a scaffold tower
- 1200mmW version is ideal for areas with high foot traffic

HEADSTOCK ACCESS



RAIL ACCESS

- Electrically-safe fibreglass AdjustaStairs may be required for use inside the rail corridor
- Set up in seconds for access from platform level to the rail line
- Clamping options available to avoid drilling into rail platform



CONTAINER ACCESS

- 600mm or 1200mm wide AdjustaStairs can be used for 2nd level container access
- Entry Landing can be configured and constructed from Proscaf to suit container door width



CANAL ACCESS

TRUCK ACCESS

- Truck AdjustaStairs have an extended top lip (for grip) and strutlocks pre-fitted – no fixing required

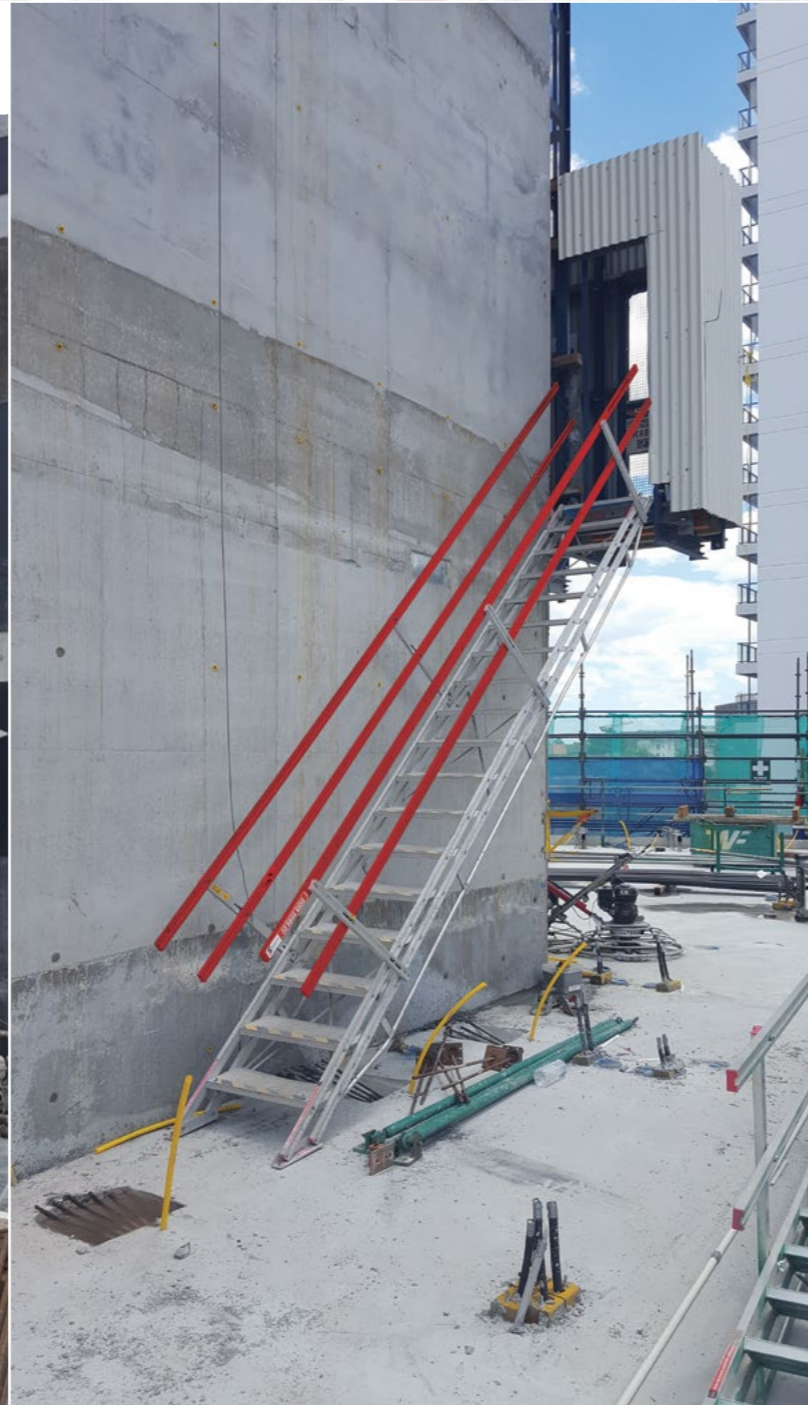


FORMWORK SCREEN ACCESS

- Adjustable feature means that the stairs can be simply fitted inside formwork screens
- Stairs can be custom made to length to fit different screens



JUMP FORM ACCESS



ACCESSORIES

ADJUSTAFORM CRANEABLE STAIR

- Height-adjustable via hand winch: 2600-3200mmH in 100mm increments
- Crane lifting points for relocation around site
- 1200mm wide, self-levelling stair treads provide safe and sturdy footing for two-way traffic
- 200mm castors to allow easy movement on uneven and rough support surfaces
- Self-supporting: no fixing to formwork or a fixed surface required
- Auto-engage, fail-safe height adjustment lock pins
- Swivelling machine jacks for fine height adjustment and stability on uneven surfaces
- Custom heights and widths are available as required

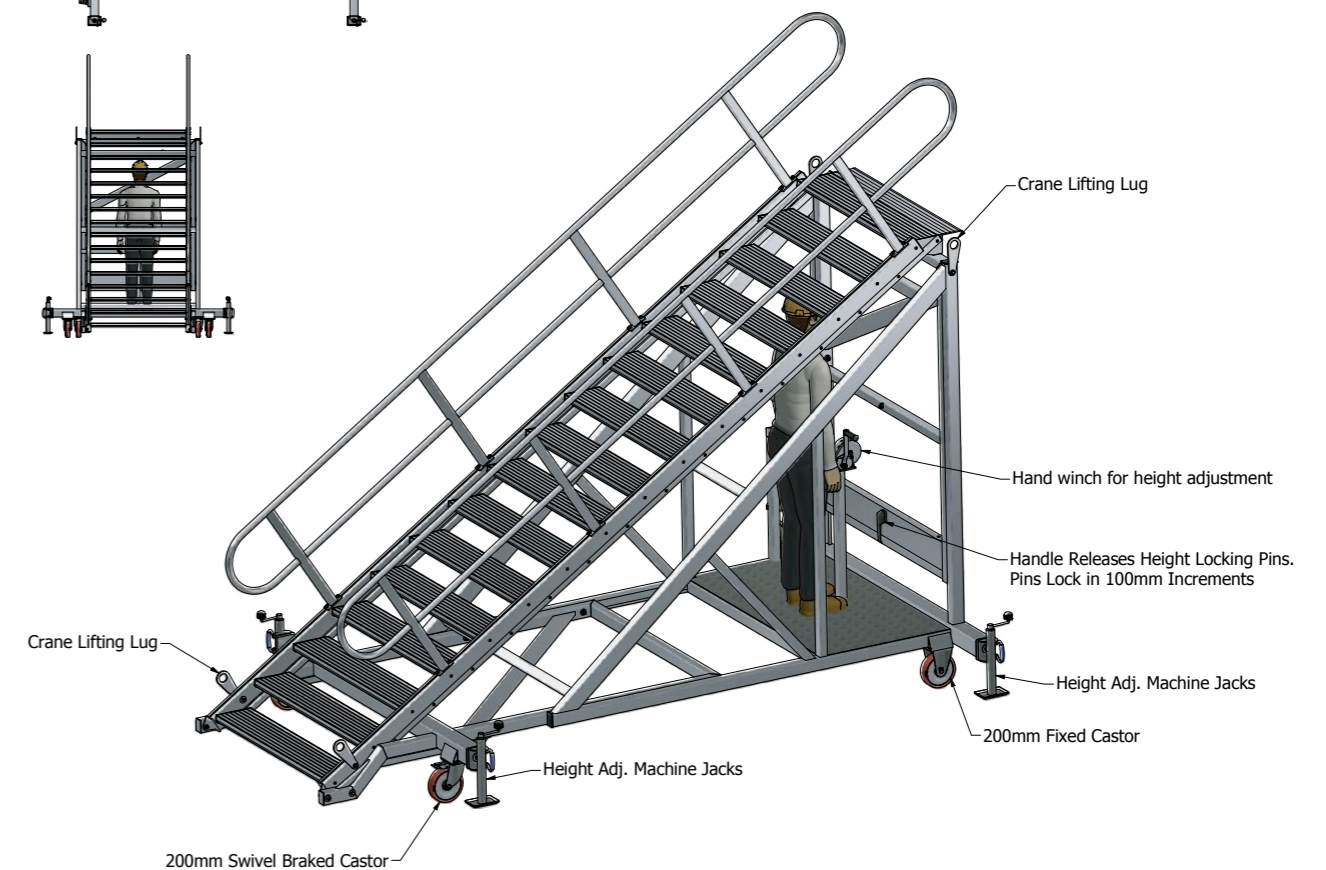
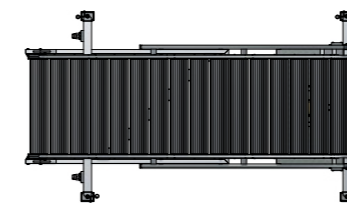
Code	Description
210083	AdjustaForm Craneable Stairs

500kg
Weight Rating

Made in
NEW ZEALAND

Complies with
AS/NZS
1657:2018
BNE EN ISO 14122

500KG
WEIGHT RATING





SYD 02 8844 4500 - MEL 03 9309 0544 - BNE 07 3266 7111

www.safesmartaccess.com.au